

Loftware Cloud gives you easy-to-use system support for labeling and traceability

We are certified with more than 15 years of experience

The former NiceLabel Cloud has now become the Loftware Cloud and we are proud to have been delivering solutions from Loftware for 15 years now.

We know how to design labels and integrate labeling into existing business environments.

Did you know that we have created an on-premise track n trace system with barcode scanning, data management and reporting created with a license in the Loftware Cloud?

Or that we can help you set up a full-scale label management system locally on-premise or in the cloud.

Certified Loftware partner



Loftware is pleased to recognize that

GRAFOKETT AKTIEBOLAG

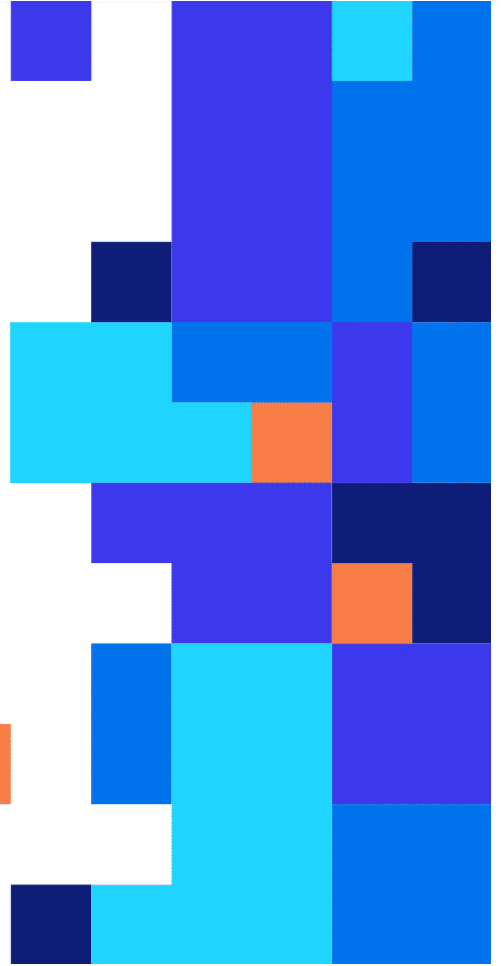
is a valued member of the
Loftware Partner Program.

April 2022

Paul Vogt
VP Channel and Alliances



www.loftware.com



Essentials Certificate

Loftware Certified

Olof Hultberg

Passed the requirements for the
NiceLabel Essentials Certification

Bob O'Connor

CEO
01/12/2023

Loftware Certified

Daniel Nehl

Passed the requirements for the
NiceLabel Essentials Certification

Bob O'Connor

CEO
01/20/2023

Loftware Certified

Robin Nyman

Passed the requirements for the
NiceLabel Essentials Certification

Bob O'Connor

CEO
01/20/2023

About the certification:

Certified by Loftware means having proven knowledge of the product, best practices and the level needed to create the desired labeling solution.

Advanced Certificate

Loftware Certified

Olof Hultberg

Passed the requirements for the
NiceLabel Advanced Certification

Bob O'Connor

CEO
01/12/2023

Loftware Certified

Robin Nyman

Passed the requirements for the
NiceLabel Advanced Certification

Bob O'Connor

CEO
02/02/2023

About the certification:

In addition to the knowledge gained during the basic certification, the advanced level gives you the tools to develop and implement labeling solutions at every conceivable level.

Whatever the environment, we can help you set up the best solution for your needs.

Email address *

Phone number



Try Loftware Cloud Designer for free!

You now get a 1-month free trial period on Loftware Cloud Designer!

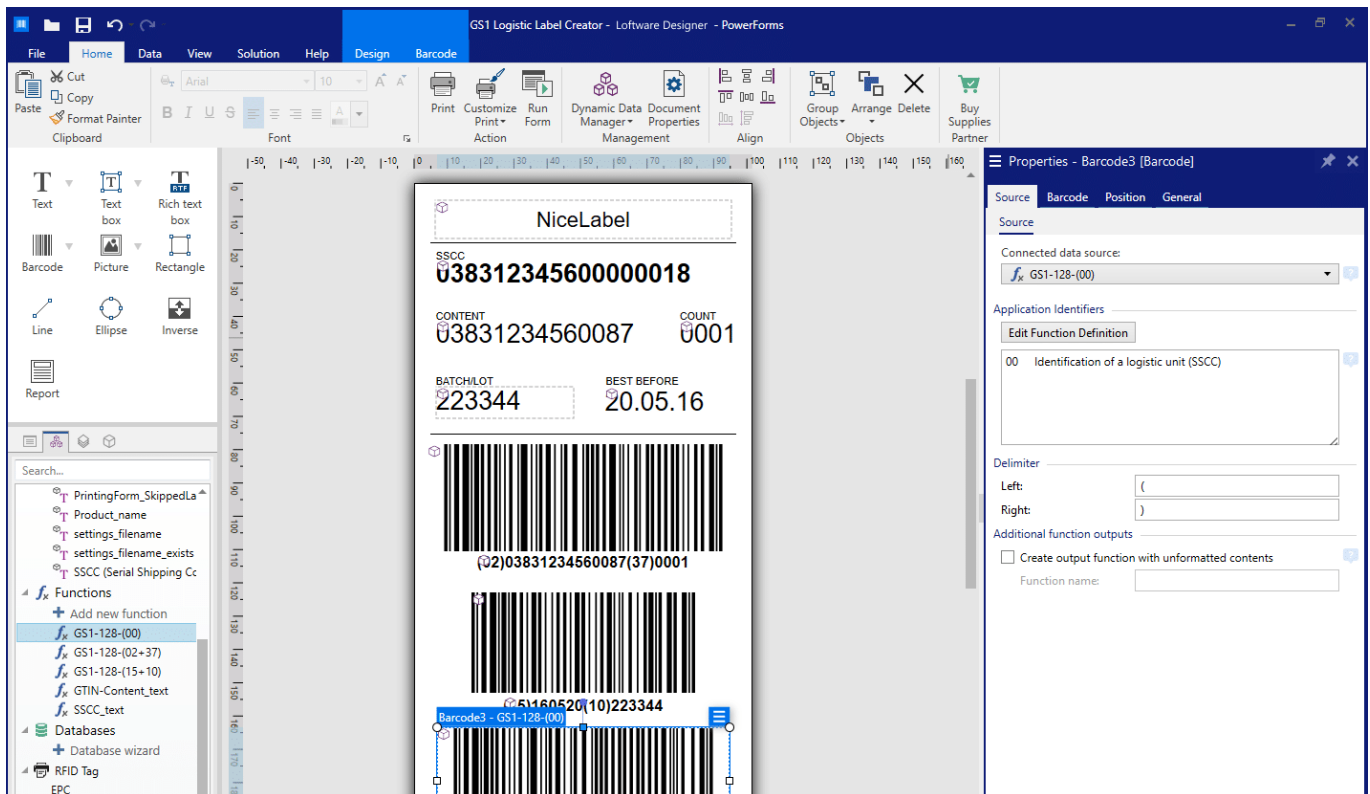
You now have the opportunity to test how a cloud-based labeling solution can revolutionize the way your company handles labels. The offer pertains to the Loftware Cloud Designer, which you have the opportunity to try free of charge for an entire month. Don't miss out!



Try Loftware Cloud

Time to acquire system support to design and produce labeling? Or do you need to increase traceability for your goods, storage locations, or cargo? Loftware Cloud is the solution. With Loftware Cloud, you can easily create labels with unique features that you need, without being a programmer. We help you with everything from small label design to advanced system connections, but also traceability and automatic routines that streamline label management, barcode technology and workflows. **Loftware Cloud is perfect for you if you want to:**

- Have a simple design program and easy-to-understand tools
- Connect to existing database (with odbc, sql, excel etc.)
- Automated printing linked to your business system
- Meeting industry requirements with existing templates



GHS Label Printing
- □ ×

ENGLISH ▾

ENTER CAS NUMBER OR PART OF THE CHEMICAL NAME

🔍

ID	cas	Name	IndexNo
10	7440-28-0	Thallium	081-001
31	89-83-8	Thymol	604-032
731	7439-97-6	Mercury	080-001
754	625-45-6	Methoxyacetic a...	607-312
3736	513-79-1	Cobalt carbonate	027-010

Manage Chemicals

Complete chemical name:

Thallium

First language:

ENGLISH ▾

Second language:

GERMAN ▾

Expiration Date:

LOT Number:


Fill Weight:


Label:

Printer:

Print quantity:

Settings






Thallium

DANGER

EN: Fatal if inhaled. Fatal if swallowed. May cause damage to organs through prolonged or repeated exposure. May cause long lasting harmful effects to aquatic life.
[In case of inadequate ventilation] wear respiratory protection. Avoid release to the environment. Do not breathe dust/fume/gas/mist/vapours/spray. Do not eat, drink or smoke when using this product. Use only outdoors or in a well-ventilated area. Wash all exposed external body areas thoroughly after handling.

CAS No.: **7440-28-0**
See SDS for further information



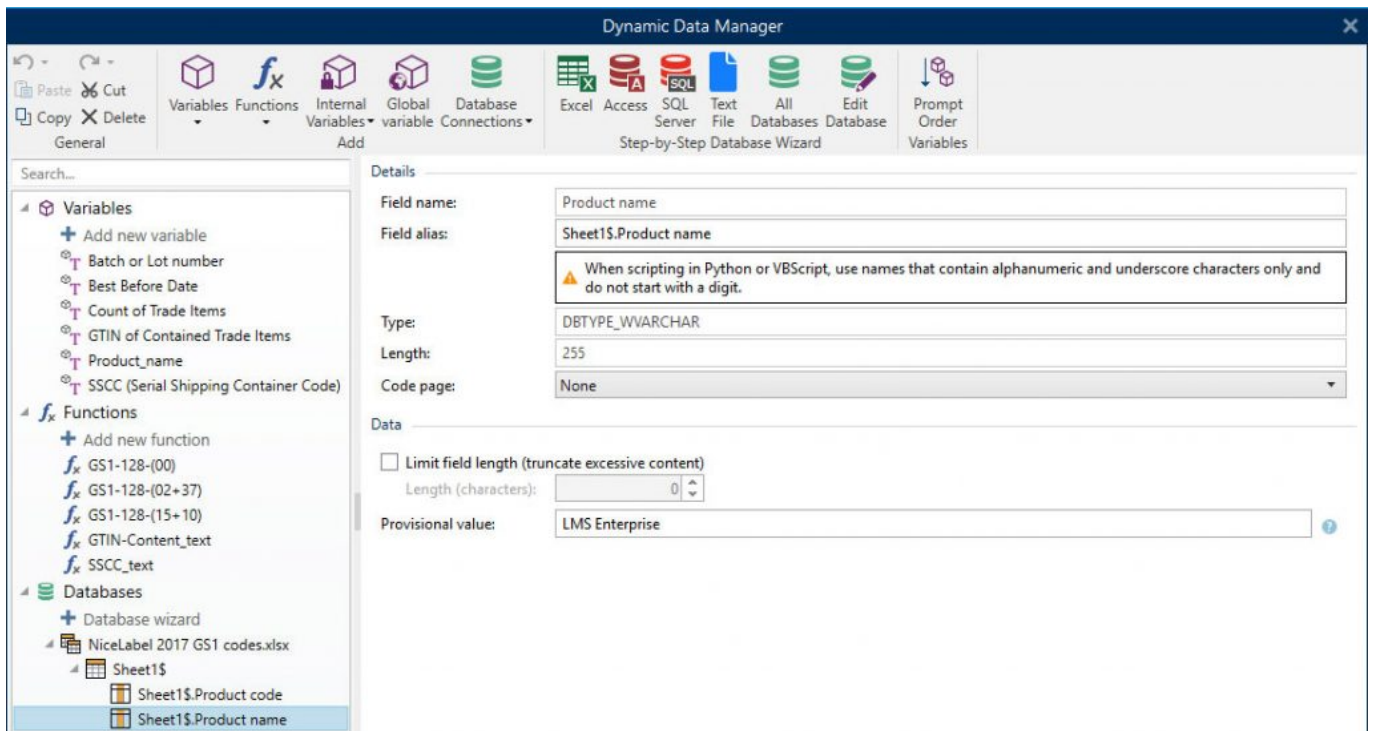
112442

Fill date: 20.10.2021
Expiration date: 20/10/2021
LOT number: 112442
Fill weight: 10
Index No.: 081-001-00-3

GEFAHR

DE: Lebensgefahr bei Einatmen. Lebensgefahr bei Verschlucken. Kann die Organe schädigen (viele betroffenen Organe nennen, sofern bekannt) bei längerer oder wiederholter Exposition (Expositionsweg angeben, wenn schlüssig belegt ist, dass diese Gefahr bei keinem anderen Expositionsweg besteht). Kann für Wasserorganismen schädlich sein, mit langfristiger Wirkung.
[Bei unzureichender Belüftung] Atemschutz tragen. Freisetzung in die Umwelt vermeiden. Staub/Rauch/Dampf/Nebel/Dampf/Aerosol nicht einatmen. Bei Gebrauch nicht essen, trinken oder rauchen. Nur im Freien oder in gut belüfteten Räumen verwenden. Waschen Sie alle ausgesetzt erlenen Körperstellen gründlich waschen.

NotLabel



Store labels with full traceability

Endlessly many companies struggle with keeping track of versions and approval of labels but a manual quality process.

Living with old quality control solutions is costly, error-prone and often fails to meet the requirements of the many industry standards and requirements.

The risk of labeling products and goods with the wrong information increases, which in turn can lead to products getting stuck in customs, staff having to relabel the products, scrapping of products, fines and sometimes even lost business

Sorry, your browser doesn't support embedded videos.

Loftware Cloud shows the differences before you approve

The screenshot displays a side-by-side comparison of two medical device labels for 'CompuHyper GlobalMed® Ultra Implantable™'. The left label is Revision 0.2 and the right is Revision 0.1. Both labels include GTIN 11111111111113, Lot AB3867, and a 'USE BY' date. The 'USE BY' date on the left is 2023-03-04, while on the right it is 2022-01-28. The comparison view below highlights these differences in red and pink, showing the 'USE BY' date change and other label elements like the manufacturer information and QR code.

Secure, electronic attestation flows

Systems to automate authorization flows to approve changes ensure that the right people sign and verify before labels are used in production.

People in the approval flow are notified by email directly from the DMS (Document Management System).

They can compare, approve or reject the change directly.

Ensuring quality through comparison

The feature of comparing two versions of labels graphically shows the differences and thus gives the user a quick idea of what has changed.

Even small things that are otherwise easily missed, such as a digit in a number or the setting of a barcode.

Keep track of what has changed

Make changes to the labels in a test environment and preview the changes before using them live in a production environment.

Guarantee that the fixed data of the label template is correct before publishing to the live environment.

You have full control over what and when something was changed and published.

Try Loftware Cloud designer

Completely free for 30 days

Loftware Cloud Designer for your business. Get a fully functional demo version that works for 30 days. Here you can test which level suits you best. Click here to access 30 days of Loftware Cloud free of charge. **About the license:** Loftware Cloud Designer are available for one printer.

Sorry, your browser doesn't support embedded videos.